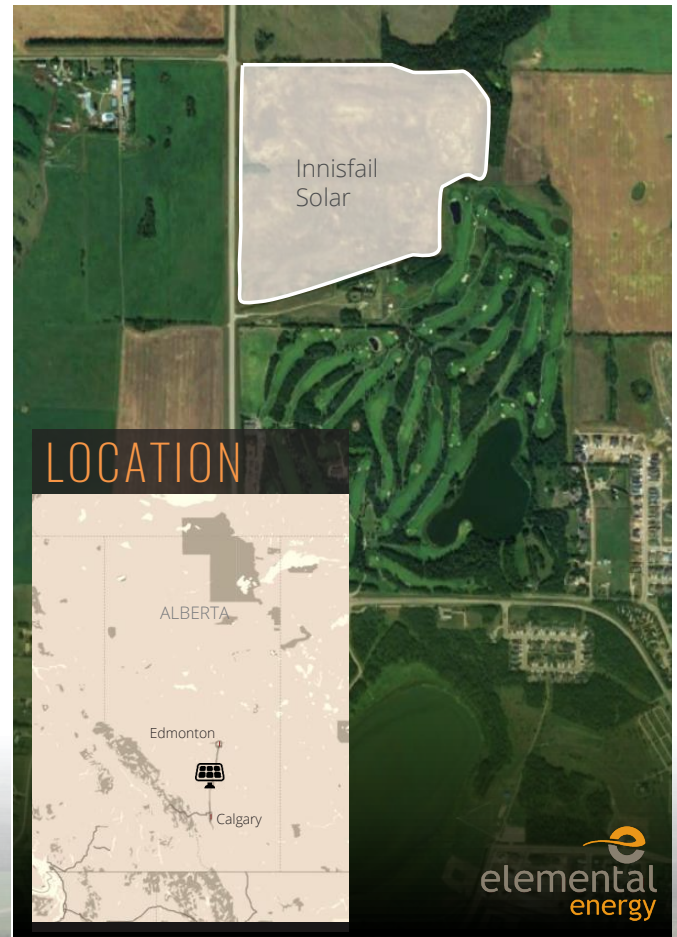


Innisfail Solar, a wholly-owned subsidiary of *Elemental Energy Inc.*, began operations of the Innisfail Solar Farm in July of 2020. Preliminary design and planning was provided by GP Joule and project construction began in late 2019. Mechanical work was completed in June 2020.

The construction project saw the creation of approximately 75 jobs at its peak. Approximately 80% of the labourers employed during construction were from Innisfail and Red Deer County, and over 95% were from Alberta.

The plant is housed on a 115-acre parcel of land owned by the Town of Innisfail. The site features solar panels which are expected to generate 25.3 MWdc of solar-generated power.

This project will benefit the town through a long-term lease, property taxes, and a community development fund. The total of these contributions will be approximately \$190,000 annually, \$20,000 of which will be an annual contribution to a community development fund which will be used to support community groups.



INNISFAIL SOLAR